

レーザーダイオード用ソケット Laser Diode Socket

丸ピンソケット構造 Round Socket pin type



Specifications

Dielectric Strength: AC500Vrms 1min
 Insulation Resistance: 500MΩmin
 Contact Resistance: 15mΩ max
 Current rating : 1.0A
 Operating Temperature: -45℃~+150℃

Material

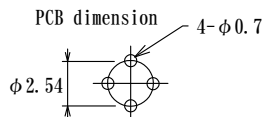
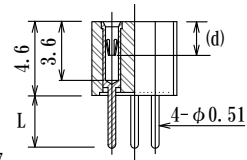
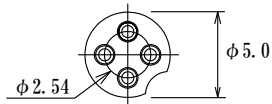
Sleeve : Brass, Gold plating over Ni
 Contact : Beryllium, Gold plating over Ni
 Insulator: PPS or LCP Black

適合リード寸法 Acceptable lead dia. $\phi 0.45/0.0177''$ typical

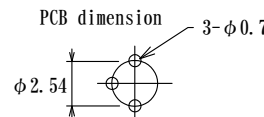
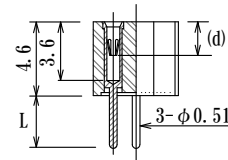
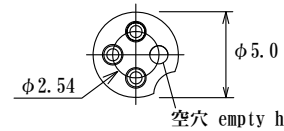
2.54mm pitch circle

P/N	L	d	Remarks	P/N	L	d	Remarks
LD254-4P-30	3.0	2.0	N0010-GG	LD254-3P-30	3.0	2.0	N0010-GG
LD254-4P-24	2.4		N0012-GG	LD254-3P-24	2.4		N0012-GG
LD254-4P-30-NV8	3.0	2.2	NNV80010-GG / Low force type	LD254-3P-30-NV8	3.0	2.2	NNV80010-GG / Low force type
LD254-4P-24-NV8	2.4		NNV80012-GG / Low force type	LD254-3P-24-NV8	2.4		NNV80012-GG / Low force type

4Pin

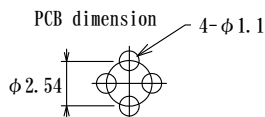
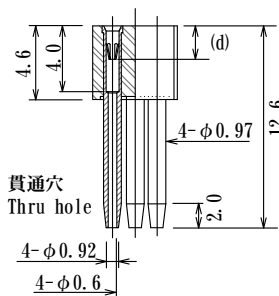
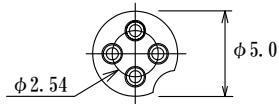


3Pin

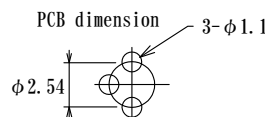
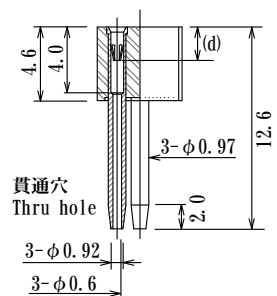
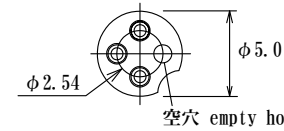


P/N	d	Remarks	P/N	d	Remarks
LD254-4P-NSP126-GG	2.0	NSP126-GG	LD254-3P-NSP126-GG	2.0	NSP126-GG
LD254-4P-NSPNV8126	2.2	NSPNV8126-GG/ Low force type	LD254-3P-NSPNV8126	2.2	NSPNV8126-GG/ Low force type

4Pin



3Pin



レーザーダイオード用ソケット
Laser Diode Socket

適合リード寸法 Acceptable lead dia. $\phi 0.45/0.0177''$ typical

2.54mm pitch circle

P/N	Remarks	P/N	Remarks
LD254P-4P-F8	N88R150L185-GG / Low force type	LD254P-3P-F8	N88R150L185-GG / Low force type
<p>4pin</p> <p>PC Board dimension (typical)</p> <p>$\phi 2.54$</p> <p>4-$\phi 0.7$</p>	<p>PC Board dimension (typical)</p> <p>$\phi 2.54$</p> <p>3-$\phi 0.7$</p>		
LD254P-4P-F7/M26	N88R150L185-GG / Low force type	LD254P-3P-F7/M26	N88R150L185-GG / Low force type
<p>4pin</p> <p>Flange type</p> <p>23.0</p> <p>15.0</p> <p>$\phi 7.0$</p> <p>$\phi 2.54$ P.C.D.</p> <p>4-$\phi 0.6$</p> <p>20.5</p> <p>11.5</p> <p>4-$\phi 0.5$</p> <p>$\phi 7.0$</p> <p>3.5</p> <p>4-$\phi 0.7$</p> <p>PC Board dimension (typical)</p> <p>2-M2.6</p> <p>$\phi 7.5$</p> <p>15.0</p> <p>Mounting Dimension</p>	<p>3pin</p> <p>Flange type</p> <p>23.0</p> <p>15.0</p> <p>$\phi 7.0$</p> <p>$\phi 2.54$ P.C.D.</p> <p>3-$\phi 0.6$</p> <p>20.5</p> <p>11.5</p> <p>3-$\phi 0.5$</p> <p>$\phi 7.0$</p> <p>3.5</p> <p>3-$\phi 0.7$</p> <p>PC Board dimension (typical)</p> <p>2-M2.6</p> <p>$\phi 7.5$</p> <p>15.0</p> <p>Mounting Dimension</p>		

レーザーダイオード用ソケット Laser Diode Socket

丸ピンソケット構造 Round Socket pin type

Specifications (Typical example)

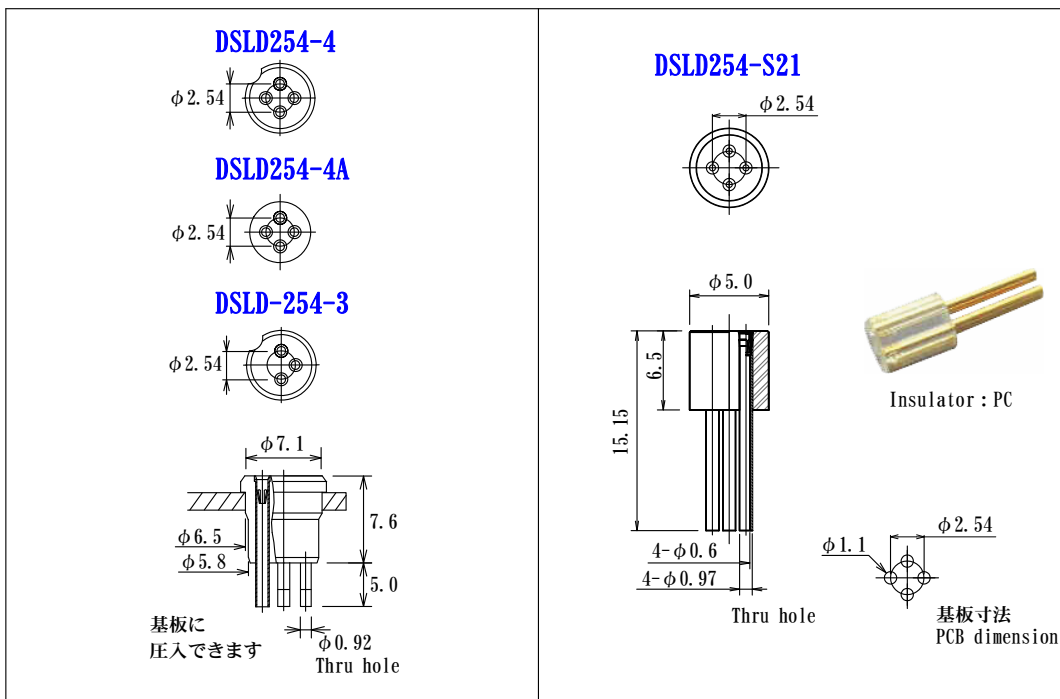
Dielectric Strength: AC500V RMS 1min
 Insulation Resistance: 500MΩmin
 Contact Resistance: 15mΩ max
 Current rating : 1.0 A
 Operating Temperature: -55℃~+150℃
 (In case of Gold plating Contact)

Material

Sleeve : Brass, Tin plating over Ni
 Contact : Beryllium, Gold plating over Ni
 Insulator: Teflon PC etc

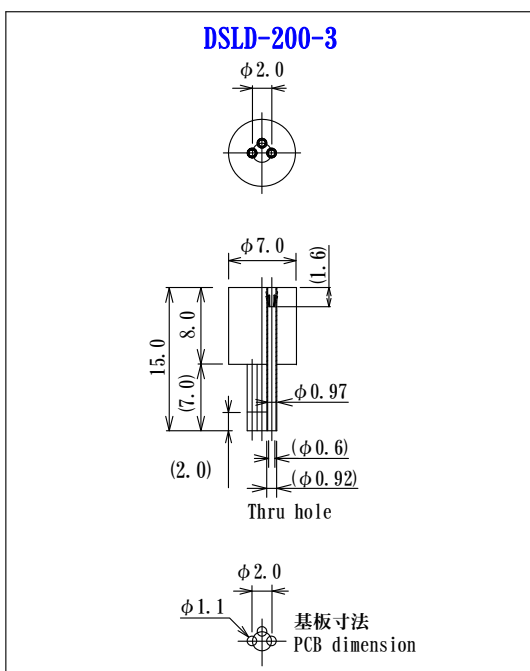
2.54mm pitch circle

適合リード寸法 Acceptable lead dia. $\phi 0.42/0.0165'' \sim \phi 0.48/0.0189''$



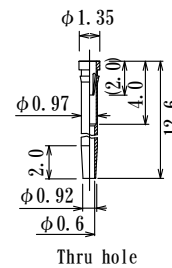
2.0mm pitch circle

適合リード寸法 Acceptable lead dia. $\phi 0.42/0.0165'' \sim \phi 0.48/0.0189''$

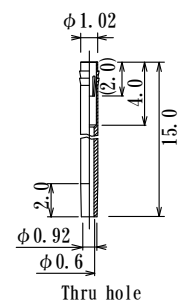


使用ソケットピン (参考)

NSP126-GG



NZP10-GG



カスタムケーブル付例
Custom order Cable