

C Connectors

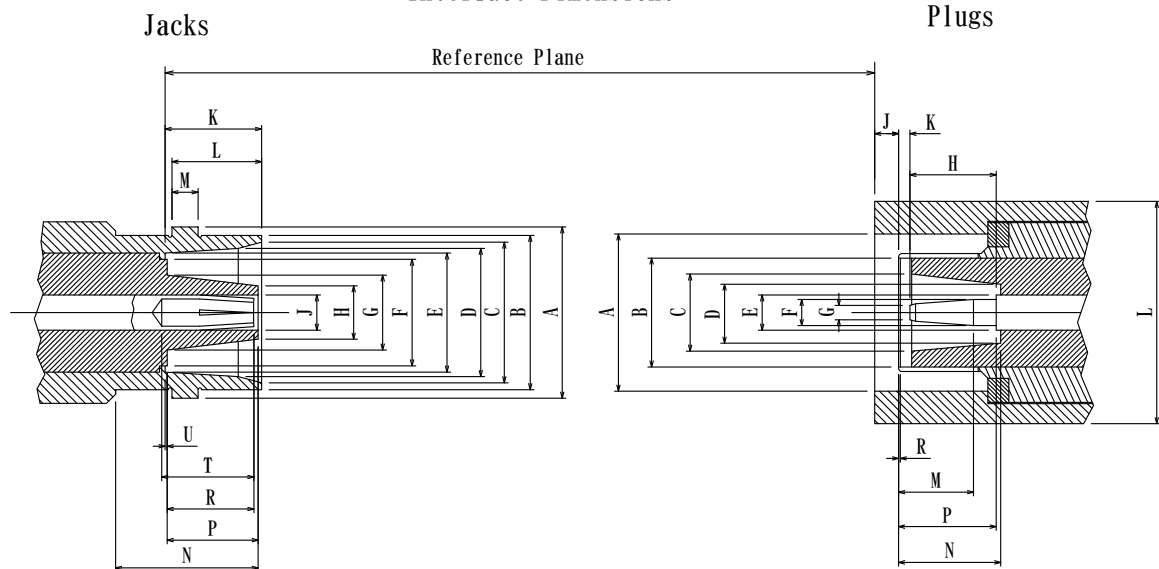
バイネット方式の結合のため、かん合が容易で確実な中型サイズのコネクタです。インピーダンスは50Ωですが、300MHz以下のさいは75Ωのケーブルとともに、使用することもあります。

With bayonet-lock coupling, it is easy and sure to mate/unmate. C connectors are medium size with 50Ω impedance. 75Ω cable can be used at lower frequencies (below 300MHz) where no serious mismatch is introduced.

標準規格 Standard Specifications	MIL-STD-348A	
特性インピーダンス Nominal impedance	50Ω	
周波数範囲 Frequency Range	DC~11GHz	
VSWR	1.35以下	
最大動作電圧 Maximum Working Voltage	AC1000V 2A current max @100MHz (depending on cable)	
耐電圧 Dielectric withstanding voltage	AC 2500V 1分間印加して異常なき事	
絶縁抵抗 Insulation resistance	5000MΩ min	
使用温度範囲 Temperature range	-65℃~+165℃	
かん合方式 Mating type	2 Stud Bayonet Coupling Lock	
保護ガasket Weather proof gasket	Silicone rubber	
適合ケーブル Cable interface type	RG213 RG214 RG8 RG9 RG11 RG225 RG393	
材質 Material	シェル Shell	黄銅 Brass Gold plated, Nickel plated
	中心ソケットコンタクト Center Socket Contact	ベリリウム銅 Beryllium copper 熱処理後、金メッキ Heat treated, Gold plated

上記仕様は代表的製品について適用されます。個々の製品についてはお問合せください。
Above characteristics are typical but may not apply to all connectors.

Interface Dimensions



	Plug	
	min	max
A	14.99/0.590"	15.24/0.600"
B	13.46/0.530"	13.72/0.540"
C	12.32/0.485"	12.57/0.495"
D	11.18/0.440"	11.43/0.450"
E	10.44/0.411"	10.54/0.415"
F	-	9.50/0.374"
G	-	6.91/0.272"
H	-	4.83/0.190"
J	3.02/0.119"	3.15/0.124"
K	8.43/0.332"	8.59/0.338"
L	7.80/0.307"	7.95/0.313"
M dia.	2.24/0.088"	2.49/0.098"
N	12.57/0.495"	-
P	-	7.85/0.309"
R	6.93/0.273"	7.70/0.303"
T	7.62/0.300"	-
U	-	0.18/0.007"

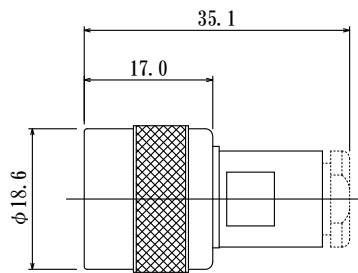
	Jack	
	min	max
A	13.79/0.543"	13.94/0.549"
B	9.58/0.377"	-
C	7.01/0.276"	-
D	4.93/0.194"	-
E	3.02/0.119"	3.15/0.124"
F	2.29/0.090"	2.34/0.092"
G	-	1.27/0.050"
H	7.54/0.297"	7.72/0.304"
J	-	2.16/0.085"
K	0.08/0.003"	1.02/0.040"
L	-	19.84/0.781"
M	4.85/0.191"	6.38/0.251"
N	7.85/0.309"	-
P	4.93/0.307"	8.56/0.337"
R	0.18/0.007"	-
T	3.33/0.131"	3.58/0.141"
V	2.62/0.103"	2.87/0.113"
W	0.25/0.010"	0.41/0.016"
X	2.64/0.104"	2.90/0.114"
Y	15.54/0.612"	-

C Connectors

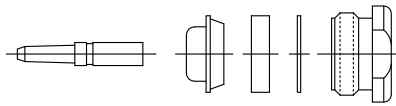
Plug , Cable Clamp

CP-CBL-CL

受注生産 Order to make



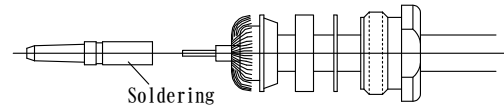
適合電線
RG58, RG55, RG141, RG142, RG223, RG400



Material & Finish

Coupling Nut : Brass, Ni plating
Shell : Brass, Ni plating
Contact : Brass, Silver plating over Ni plating
Insulator : PTFE

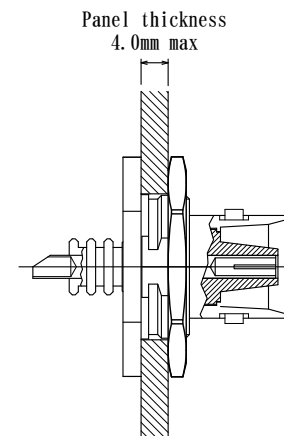
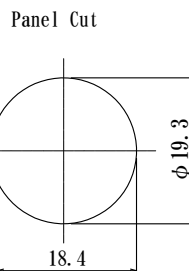
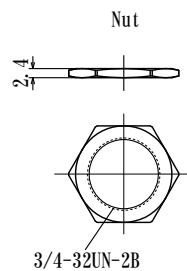
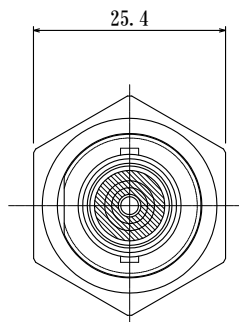
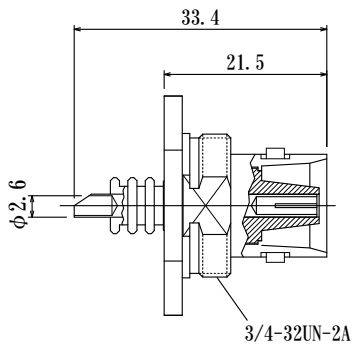
How to assemble



Flange Mount , Receptacle

CJ-BK-UG634

標準品



Material & Finish

Nut : Brass, Ni plating
Shell : Brass, Ni plating
Contact : Beryllium Copper, Silver plating over Ni plating
Insulator : PTFE

* mark product is made only upon order.