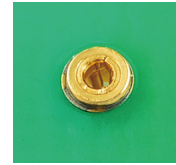
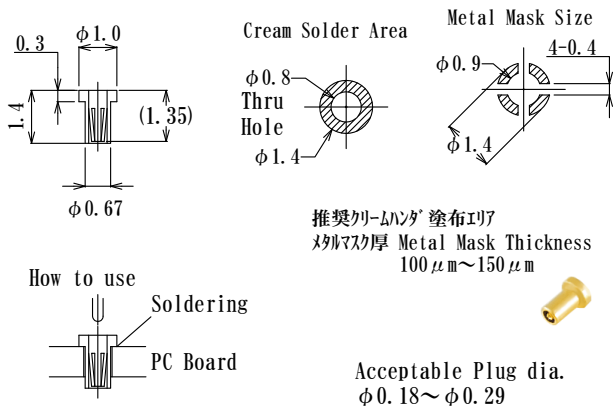


貫通ショートタイプ、丸ピンソケット  
Thru Hole Short type, Round Socket Pin

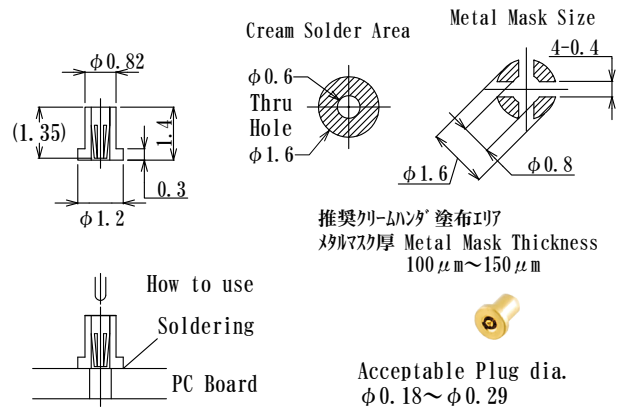


: mm

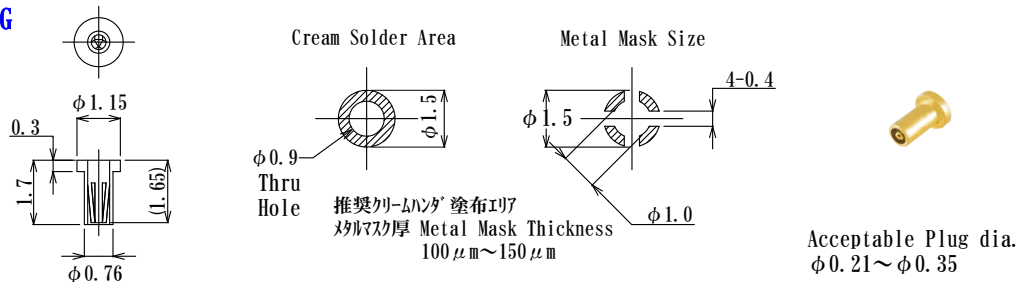
NV5P-F10L14-GG



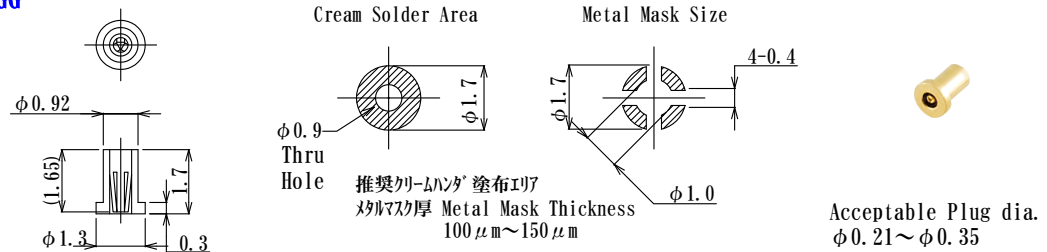
NV5P-F12L14-GG



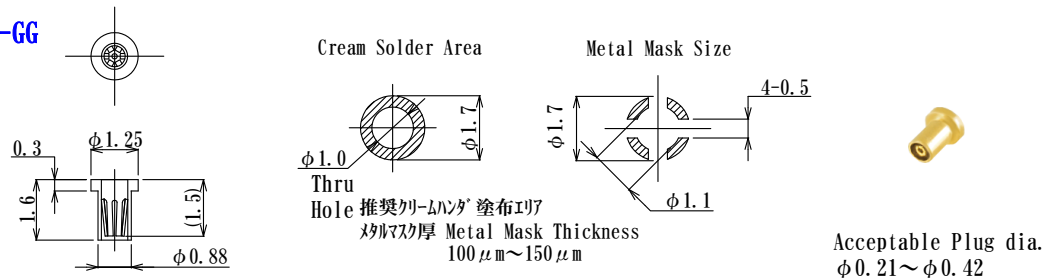
NV6P-F115L17-GG



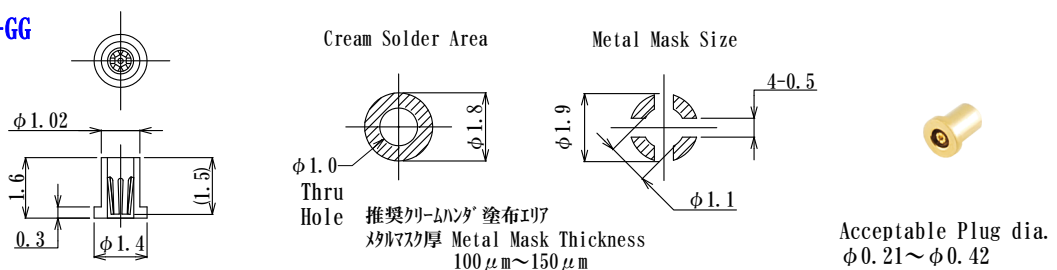
NV6P-F13L17-GG



NV7P-F125L16-GG



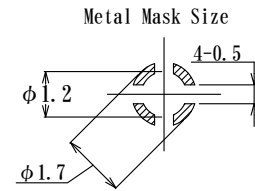
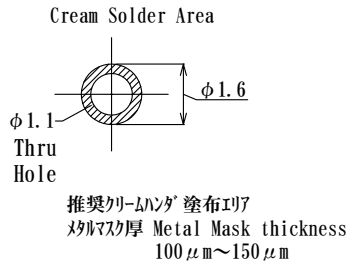
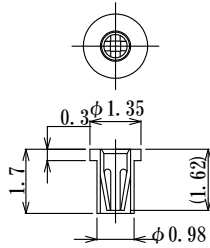
NV7P-F14L16-GG



貫通ショートタイプ、丸ピンソケット  
Thru Hole Short type, Round Socket Pin

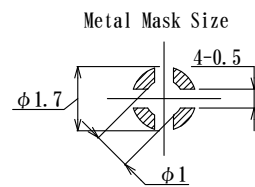
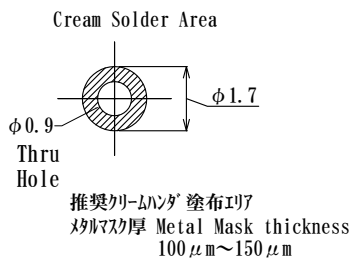
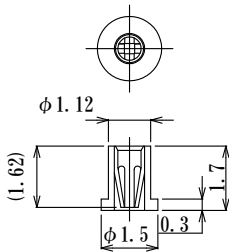
: mm

NZP-F135L17-GG



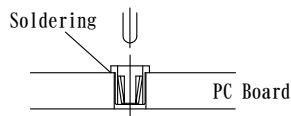
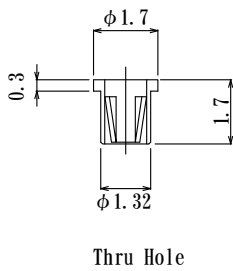
Acceptable Plug dia.  
φ0.3 ~ φ0.52

NZP-F15L17-GG

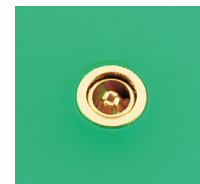


Acceptable Plug dia.  
φ0.3 ~ φ0.52

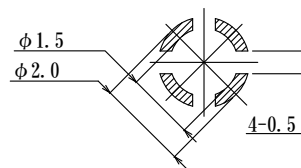
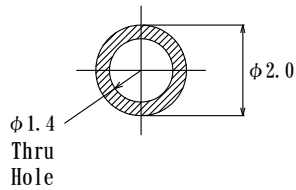
JSS17-GG



推奨クリームハンダ 塗布エリア  
メタルマスク厚 Metal Mask thickness  
100 μm ~ 150 μm



Metal Mask Size



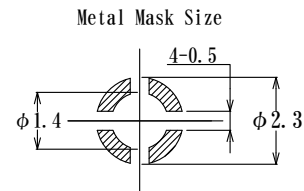
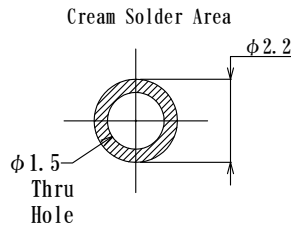
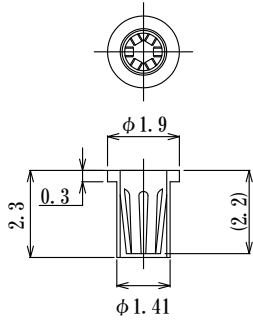
Acceptable Plug dia.  
φ0.38 ~ φ0.60

(JV11)

貫通ショートタイプ、丸ピンソケット  
Thru Hole Short type, Round Socket Pin

:mm

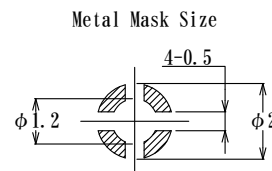
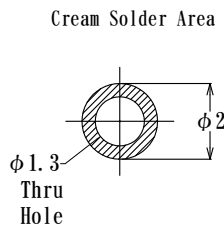
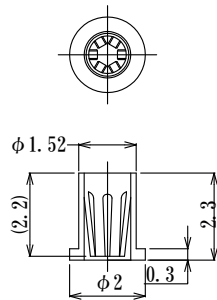
866-F19L23-GG



推奨クリーマング 塗布エリア  
メタルマスク厚 Metal Mask thickness  
100 μm ~ 150 μm

Acceptable Plug dia.  
φ0.65 ~ φ0.85

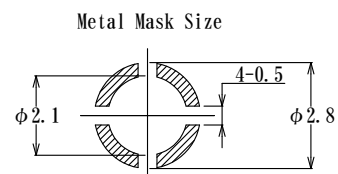
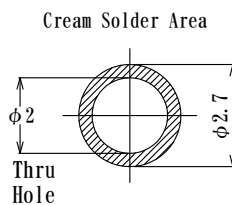
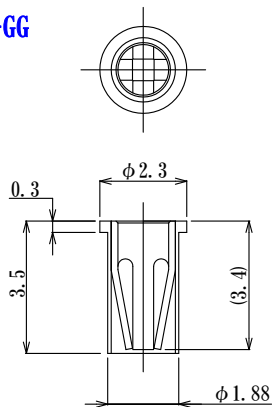
866-F20L23-GG



推奨クリーマング 塗布エリア  
メタルマスク厚 Metal Mask thickness  
100 μm ~ 150 μm

Acceptable Plug dia.  
φ0.65 ~ φ0.85

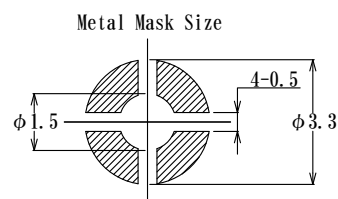
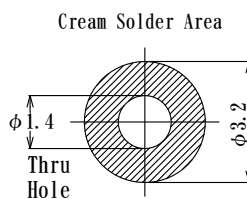
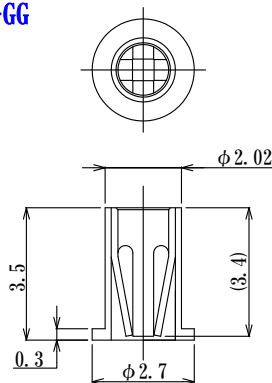
CM1-F23L35-GG



推奨クリーマング 塗布エリア  
メタルマスク厚 Metal Mask thickness  
100 μm ~ 150 μm

Acceptable Plug dia.  
φ0.7 ~ φ1.05

CM1-F27L35-GG



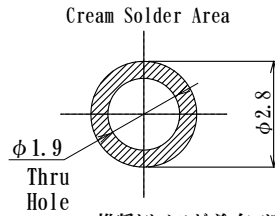
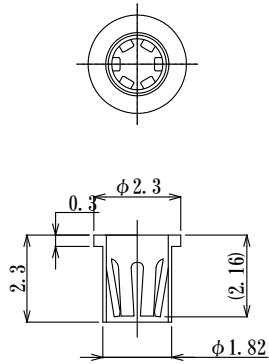
推奨クリーマング 塗布エリア  
メタルマスク厚 Metal Mask thickness  
100 μm ~ 150 μm

Acceptable Plug dia.  
φ0.7 ~ φ1.05

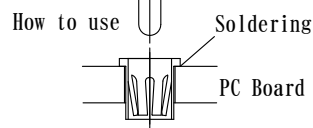
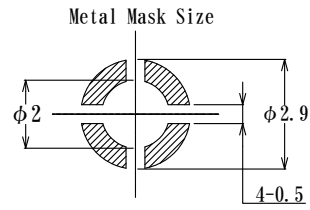
貫通ショートタイプ、丸ピンソケット  
Thru Hole Short type, Round Socket Pin

: mm

DPA5P-F23L23-GG

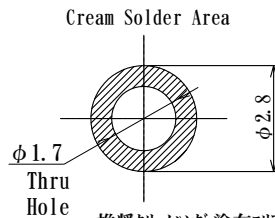
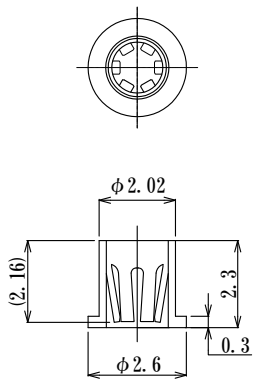


推奨カーボン\* 塗布エリア  
メタルマスク厚 Metal Mask thickness  
100 μm ~ 150 μm

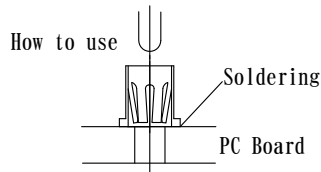
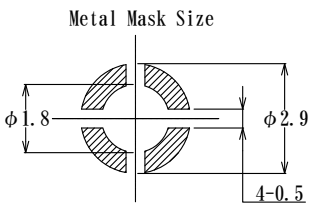


Acceptable Plug dia.  
φ 1.0 ~ φ 1.3

DPA5P-F26L23-GG



推奨カーボン\* 塗布エリア  
メタルマスク厚 Metal Mask thickness  
100 μm ~ 150 μm



Acceptable Plug dia.  
φ 1.0 ~ φ 1.3